



ELECTRIC TANK-TYPE WATER HEATERS 6 KW THRU 54 KW



Standard Features:

- System Sentinel™ L.E.D. diagnostic system
- Surface mounted and immersion thermostat models available
- Lifeguard stainless steel elements
- 208, 240, 277 and 480 voltages
- 3 year limited tank warranty
- Manual reset high limit control
- Magnetic contactors and integral fusing
- 1-1/2" NPT inlet/outlet dielectric nipples factory installed
- 3" Rigid polyurethane foam insulation



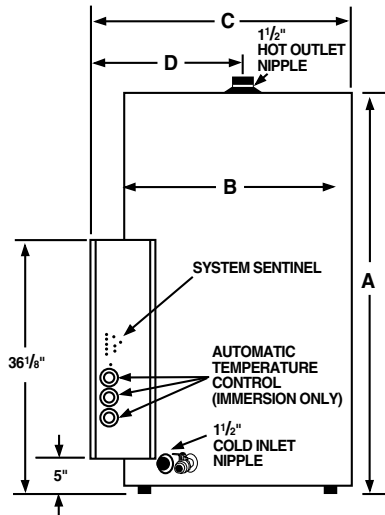
(With Optional Seal Kit)



- Heavy duty anode rods
- Full port, full flow, brass drain valve
- Factory installed AGA/ASME rated T&P relief valve
- Certified for a 150 PSI maximum working pressure (160 PSI for ASME models)
- Factory wired 3-phase

Options:

- UL Sanitation compliant models available
- Thermostat staging
- ASME construction available on E models



MODEL NUMBERS					
SURFACE MOUNTED THERMOSTATS			IMMERSION THERMOSTATS		
Tank Capacity In Gallons			Tank Capacity In Gallons		
50	85	120	50	85	120
TES50-6-G	TES85-6-G	TES120-6-G	TE50-6-G	TE85-6-G	TE120-6-G
TES50-9-G	TES85-9-G	TES120-9-G	TE50-9-G	TE85-9-G	TE120-9-G
TES50-12-G	TES85-12-G	TES120-12-G	TE50-12-G	E85-12-G	TE120-12-G
TES50-15-G	TES85-15-G	TES120-15-G	TE50-15-G	TE85-15-G	TE120-15-G
TES50-18-G	TES85-18-G	TES120-18-G	TE50-18-G	TE85-18-G	TE120-18-G
TES50-24-G	TES85-24-G	TES120-24-G	TE50-24-G	TE85-24-G	TE120-24-G
TES50-27-G	TES85-27-G	TES120-27-G	TE50-27-G	TE85-27-G	TE120-27-G
TES50-30-G	TES85-30-G	TES120-30-G	TE50-30-G	TE85-30-G	TE120-30-G
TES50-36-G	TES85-36-G	TES120-36-G	TE50-36-G	TE85-36-G	TE120-36-G
TES50-45-G	TES85-45-G	TES120-45-G	TE50-45-G	TE85-45-G	TE120-45-G
TES50-54-G	TES85-54-G	TES120-54-G	TE50-54-G	TE85-54-G	TE120-54-G

RECOVERY CAPACITIES							
INPUT KW	EQUIVALENT BTU/HR.	TEMPERATURE RISE – DEGREES F – GPH					
		40°	60°	80°	100°	120°	140°
6	20,473	62	41	31	25	21	18
9	30,709	92	61	46	37	31	26
12	40,946	123	82	61	49	41	35
15	51,182	154	102	77	61	51	44
18	61,418	184	123	92	74	61	53
24	81,891	246	164	123	98	82	70
27	92,128	276	184	138	111	92	79
30	102,364	307	205	154	123	102	88
36	122,837	369	246	184	147	123	105
45	153,546	461	307	230	184	154	132
54	184,256	553	369	276	221	184	158

In accordance with ANSI test procedures, these models tested below the maximum allowable standby loss levels of ASHRAE Standard 90.1 (Part of the Federally mandated Energy Policy Act (EPact)). Also exceeds energy codes of all states including California Energy Commission (CEC).

DIMENSIONAL INFORMATION(All dimensions shown in inches)						
MODEL NUMBER	A	B	C	D	APPROX. SHIPPING WEIGHT (LBS.)	
					STD.	ASME*
TE(S)50	43-5/8	26-1/4	32	17-1/4	270	320
TE(S)85	57-11/16	28-1/4	34	18-1/4	350	380
TE(2)120	67-5/8	30-1/4	36	19-1/4	430	460

*ASME construction available only on Immersion Thermostat Models.

WATER TEMPERATURE RATINGS				
Model Number	Thermostat Type	Minimum Delivered Temperature	Maximum Delivered Temperature	High Temperature Limit
TES50	Surface	90°F	160°F	180°F
TES85, TES120	Surface	120°F	160°F	190°F
TE50, TE85, TE120	Immersion	90°F	190°F	200°F

All models are North Carolina Code compliant.